

# NDRC Project Information Sheet

Submission Deadline; July 10, 2015, Project Information can be submitted on line at [CA-NDRC@hcd.ca.gov](mailto:CA-NDRC@hcd.ca.gov) or mailed to Tuolumne County Administrator's Office (2 South Green Street, Sonora, CA 95370)

1. Agency/Organization Project Sponsor:

2. Project Contact (Name, Email, Phone #):

3. Scope of Proposed Project- Include Project Goals and Objectives, Timeline and Tasks (Please submit as an attachment, **1 page max**)

4. List all Agency/Organizations involved in Project and their Role:

5. List Measure(s) of Project Accomplishments/Expected Outcomes:

6. How does this Project meet the resilient recovery objectives outlined in the NDRC grant application?:

7. What is the target area for the project (i.e., where is it located, who are beneficiaries, etc)?:

8. Has this project undergone environmental review? If yes, what stage is it in?

9. NDRC Application Budget Request (please attach a detailed project budget):

10. What guarantees are in place to insure the success of implementing this project?

11. How will this project be sustainable after implementation?

---

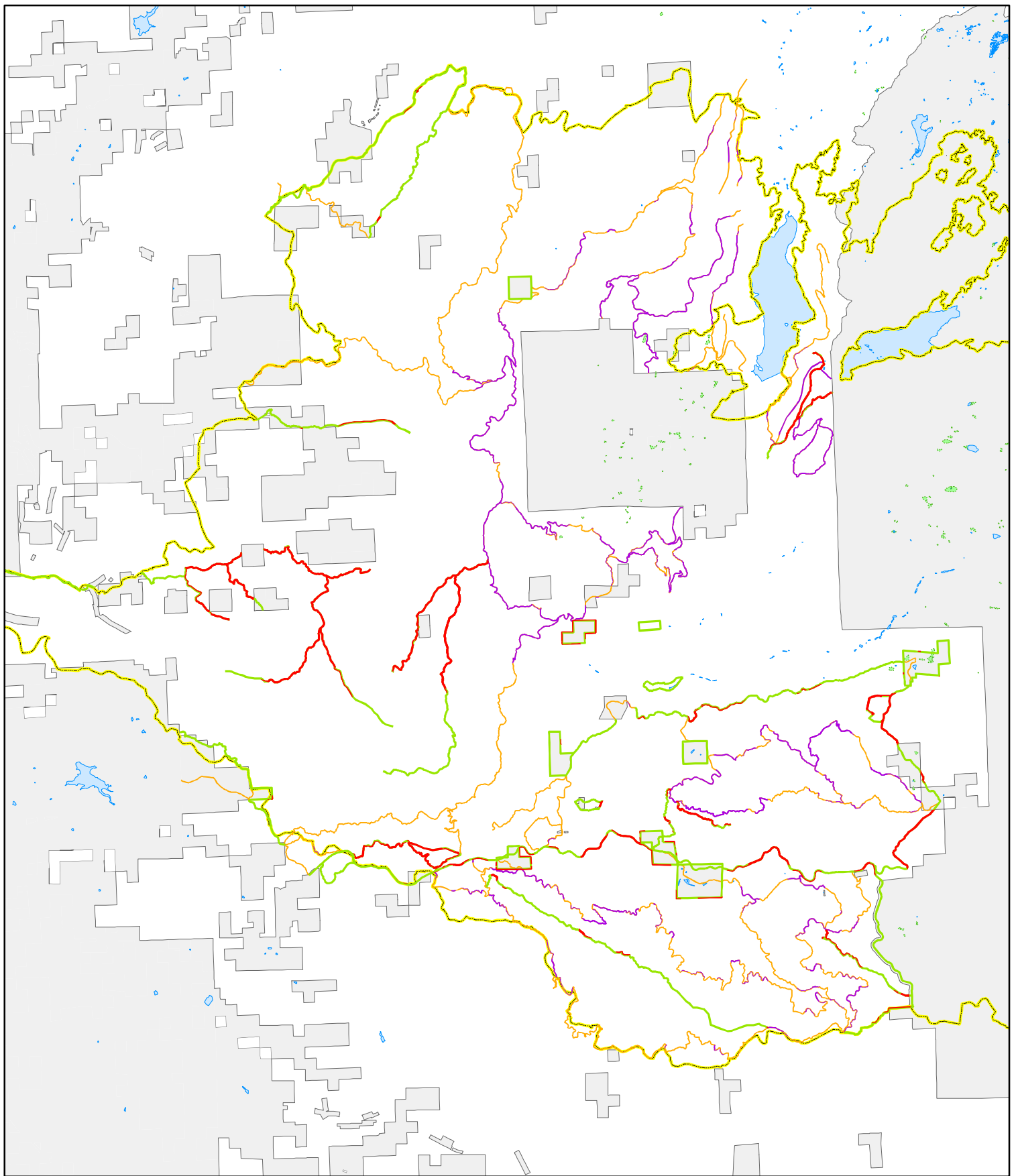
## NDRC Committee Use Only:

EVALUATION CRITERIA:  Meets National Objective       Eligible Activity       Meets Overall Benefit Requirement  
 Within Target Area       Ties Back to Disaster       Incorporates Resilience  
 Meets Cost Benefit Analysis Objectives

WORKING GROUP:  Forest     Infrastructure     Public Facilities/Public Services

## Cost Estimate

Fuelbreaks approved by NEPA	1614 ac.	\$1,614,000
Travel Routes approved by NEPA	1588 ac.	\$1,588,000
<b>Totals</b>	<b>3202 ac.</b>	<b>\$3,202,000</b>



7.5 3.75 0 7.5 Miles

**Legend**

- █ Fuelbreak\_NEPA\_approved
- █ TravelRoute\_NEPA\_approved
- █ Future\_Fuelbreaks\_NoNEPA
- █ Future\_TravelRoutes\_NoNEPA
- Rim\_CASTF2857\_FinalPerimeter

# Stanislaus N.F.

## Proposed Rim Fuelbreaks

8/10/15

