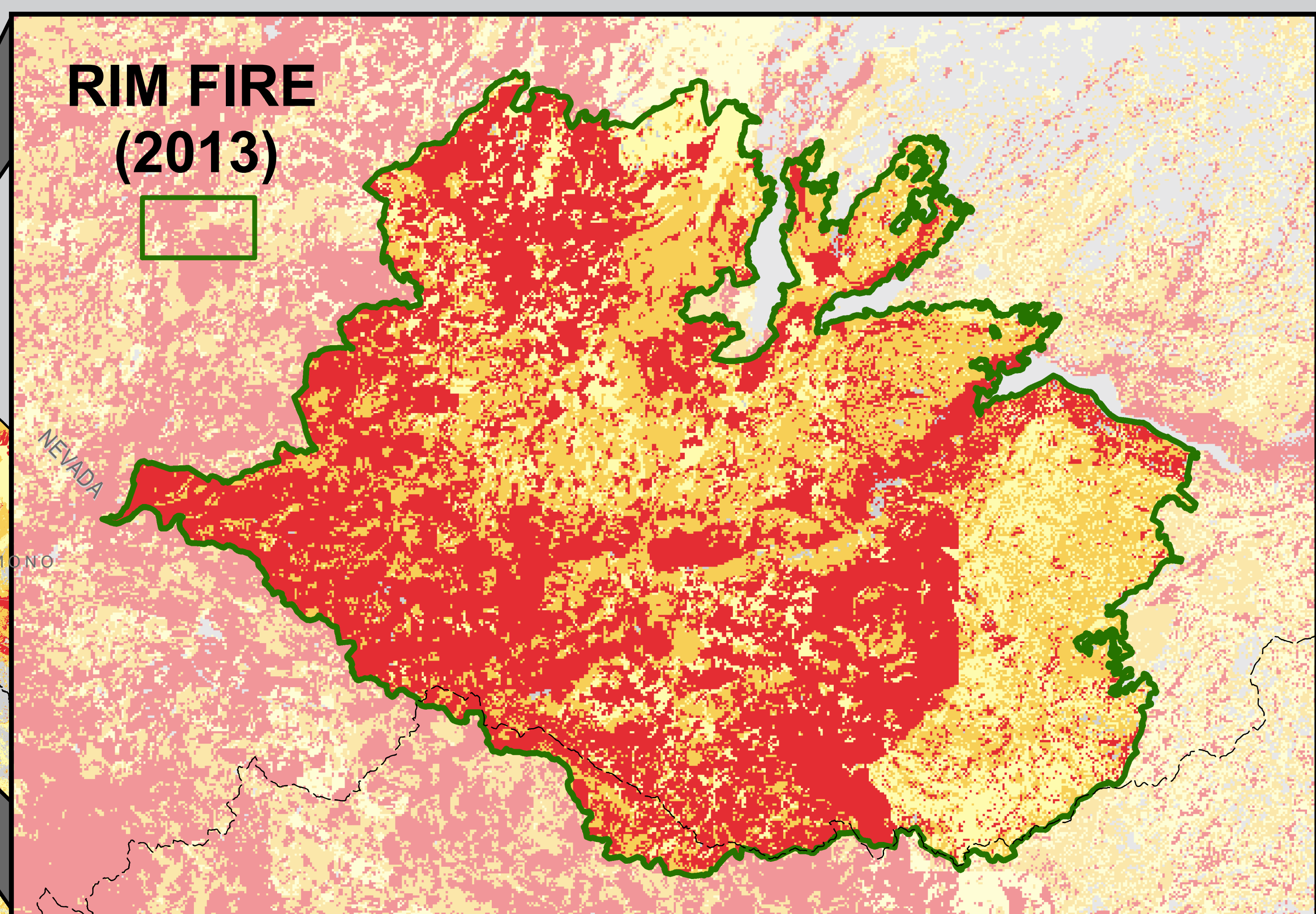


FIRE THREAT (2005)



CAL FIRE - FRAP has developed a rating of wildland fire threat based on the combination of potential fire behavior (Fuel Rank) and expected fire frequency (Fire Rotation) to create a 4-class index for risk assessment. Areas that do not support wildland fuels (eg., open water, agricultural lands, etc.) are omitted from the calculation. Most large urbanized areas receive a moderate fire threat classification to account for fires carried by ornamental vegetation and flammable structures.



The State of California and the Department of Forestry and Fire Protection make no representations or warranties regarding the accuracy of data or maps. Neither the State nor the Department shall be liable under any circumstances for any direct, special, incidental, or consequential damages with respect to any claim by any user or third party on account of, or arising from, the use of data or maps.

Obtain FRAP maps, data, metadata and publications on the Internet at <http://frap.cdf.ca.gov>
For more information, contact CAL FIRE - FRAP, PO Box 944246, Sacramento, CA 94244-2460, (916) 327-3939.