



# THE COMMUNITY AND WATERSHED RESILIENCE PROGRAM

## WHAT IS THE COMMUNITY AND WATERSHED RESILIENCE PROGRAM?

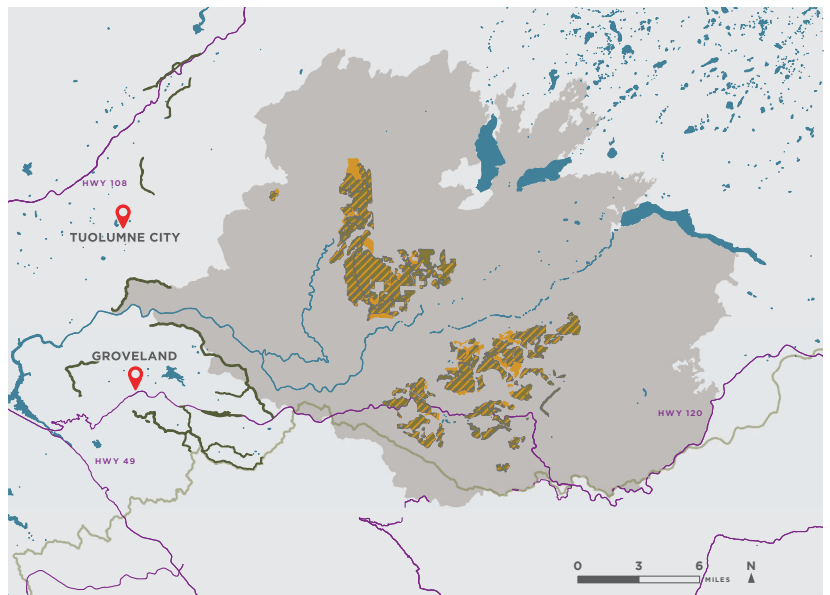
The Community and Watershed Resilience Program (CWRP) is a grant funded by the U.S. Department of Housing and Urban Development through the National Disaster Resilience Competition.

This \$70 million project is a collaborative effort made up of local, state, and federal partners including Tuolumne County, California Department of Housing and Community Development, Sierra Nevada Conservancy, California Environmental Protection Agency, Governor’s Office of Planning and Research, U.S. Forest Service, California Department of Forestry and Fire Protection, and the U.S. Department of Housing and Urban Development.

## A COMMUNITY IN PERIL

The 2013 Rim Fire burned more than 257,000 acres and devastated the landscape and local communities. It resulted in significant impacts to the local economy, threatened access to clean and drinkable water, disrupted the lives of thousands of people, and damaged air quality. Initial estimates indicate that the Rim Fire released 11 million metric tons of greenhouse gasses (GHGs), or roughly equivalent to the annual GHG emissions from 2.3 million cars.

The CWRP is designed to address unmet recovery needs in the Rim Fire footprint, while also supporting community protection and resilience.



## WHAT DOES COMMUNITY PROTECTION AND RESILIENCE LOOK LIKE?

A more resilient watershed and community are better prepared for the next intense fire. The CWRP will achieve this through a series of three projects:

- The Community Resilience Center (CRC) will provide resources and community protection from future fires.
- The Forest and Watershed Health Program (FWHP) will restore forests and watersheds to be healthy and resilient to future disturbances.
- A Biomass Utilization Facility (BUF) will utilize woody biomass and support ongoing forest restoration efforts.

The projects will serve as a model to proactively plan and think about resilience differently in their communities.

CWRP PROJECT MAP - December 2017

Fuel Breaks	Roads
Target Biomass & Reforestation Areas	Lakes and Major Rivers
Target Reforestation Areas	Tuolumne County
Target Biomass Removal Areas	Rim Fire Area

To find out more about the CWRP, visit:  
[www.hcd.ca.gov/community-development/disaster-recovery-programs/ndrc.shtml](http://www.hcd.ca.gov/community-development/disaster-recovery-programs/ndrc.shtml)





## PILLAR: COMMUNITY RESILIENCE CENTER(S)

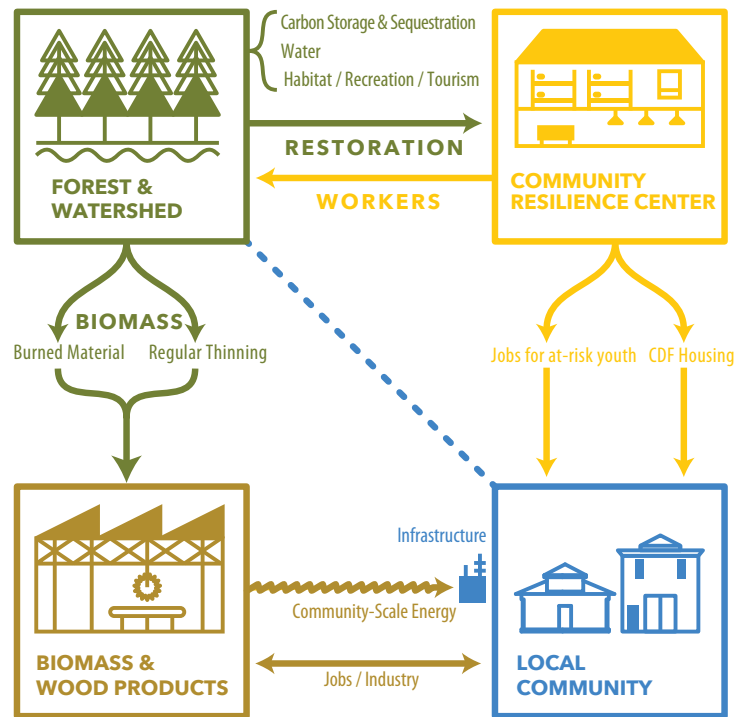
**Approximate funding awarded: \$20 mil**

**Date to be completed: 2022**

The Community Resilience Center(s) (CRC), led by Tuolumne County, will provide shelter and necessary resources in the event of a disaster. It will also support community services, educational programs, and job training year-round. The center(s) will be located within Tuolumne County and serve communities previously affected by the Rim Fire.

Extensive stakeholder outreach is currently underway to solicit public input on the design, services, and locations of the CRC.

The program will help others to proactively plan and think about resilience differently in their communities.



*Three pillars of the Community and Watershed Resilience Program*

To find out more about the CRC, visit:  
[www.tuolumnecounty.ca.gov/951/National-Disaster-Resilience-Competition](http://www.tuolumnecounty.ca.gov/951/National-Disaster-Resilience-Competition)





## PILLAR: FOREST AND WATERSHED HEALTH PROGRAM

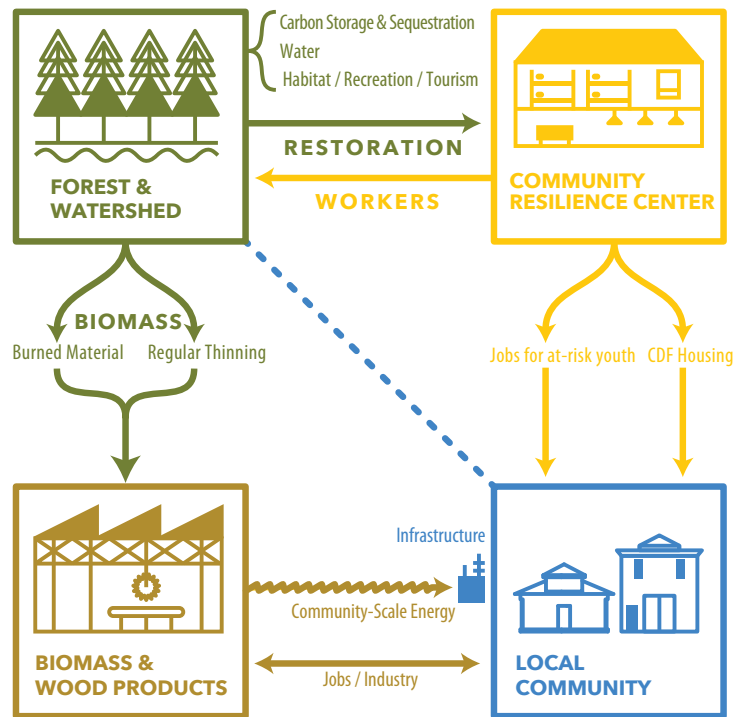
**Approximate funding awarded: \$28 mil**

**Date to be completed: 2022**

The Forest and Watershed Health Program, led by the Sierra Nevada Conservancy in cooperation with the U.S. Forest Service and CAL FIRE, will restore and protect the health of one of California's most vital watersheds by:

- Removing dead material from forests that act as fuel for the next fire on up to 4,600 acres
- Controlling and minimizing the spread of noxious weeds on up to 3,500 acres
- Rebuilding rangeland infrastructure such as fencing and wildlife friendly troughs
- Replanting a diverse and resilient mixed conifer forest on up to 4,500 acres
- Creating and enhancing strategic fuel breaks to reduce future fire risk throughout Tuolumne County

The efforts will take place within and around the Rim Fire footprint and will be critical in order to continue to enjoy the broad range of benefits that millions of residents depend on such as wildlife habitat, clean water, carbon storage, recreation, and wood products.



*Three pillars of the Community and Watershed Resilience Program*

To find out more about the Forest and Watershed Health Program, visit:  
<http://www.snc.ca.gov/NDRC>





## PILLAR: BIOMASS UTILIZATION FACILITY

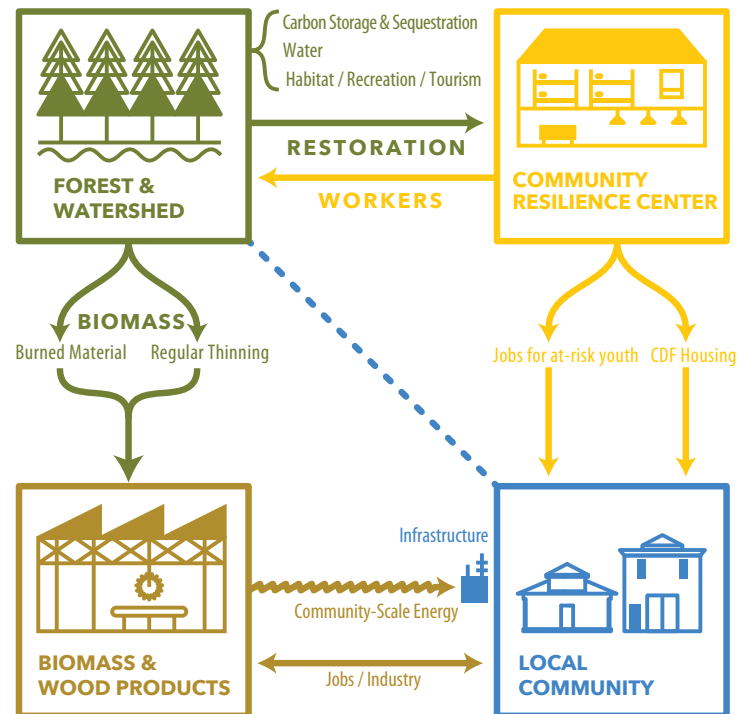
**Approximate funding awarded: \$22 mil**

**Date to be completed: 2022**

This grant will design and construct a new Biomass Utilization Facility. This effort will be led by the Sierra Nevada Conservancy (SNC) and will utilize woody biomass from forest restoration activities and complement existing wood processing infrastructure in Tuolumne County. SNC is completing a feasibility study to inform the design and location of the facility. Building on community input, SNC will help identify options for the development and construction of the biomass utilization facility.

Putting forest waste to use will create jobs and minimize air quality impacts compared to burning onsite. This facility will prove the concept that small scale biomass can be a model for creating economic opportunity in the Sierra Nevada Region, while contributing to forest resilience efforts.

The facility will be located in Tuolumne County and will source material from surrounding forests.



*Three pillars of the Community and Watershed Resilience Program*

To find out more about the Biomass Utilization Facility, visit:  
<http://www.snc.ca.gov/NDRC>

