

# ***2025 Housing Element & General Plan Annual Progress Report (APR) Webinar***

---

Department of Housing and Community Development (HCD)  
Governor's Office of Land Use & Climate Innovation (LCI)

## **HCD Presenters:**

- Kevan Rolfness, *Housing Data Specialist*
- Isaac O'Connell, *Housing Data Specialist*
- Fidel Herrera, *Housing Element Implementation Section Chief*

## **LCI Presenters:**

- Nils Jepson, *Assistant Planner*
- Patricia Kennedy, *Policy Programs Manager*





# APR Webinar Contents

- HCD – Housing Element APRs
  - Overview & Timeline
  - Updates to 2025 Form
  - HCD Connect – How to Submit
  - Accessing & Revising APR Data
  - **Detailed APR Form Walkthrough**
- LCI – General Plan APRs
  - GP APR Overview
  - Content Considerations
  - Submission Requirements
- Q & A (15 minutes)



## Q&A

**Please ask your questions in the Zoom Q&A as they come up throughout the Webinar**



# Overview & Timeline

- **Gov. Code § 65400:** Each jurisdiction required to prepare APR using form and definitions adopted by HCD
- **2025 APR Reporting Timeline:**
  - **Jan. 2, 2026** – HCD begins accepting submissions of 2025 APRs
  - **Jan. 30** – HCD hosts APR Office Hours session #1 (1:30-3:00pm)
  - **Feb. 27** – APR Office Hours session #2 (1:30-3:00pm)
  - **Mar. 27** – APR Office Hours session #3 (1:30-3:00pm)
  - **Apr. 1** – Statutory deadline for all jurisdictions to submit 2025 APR



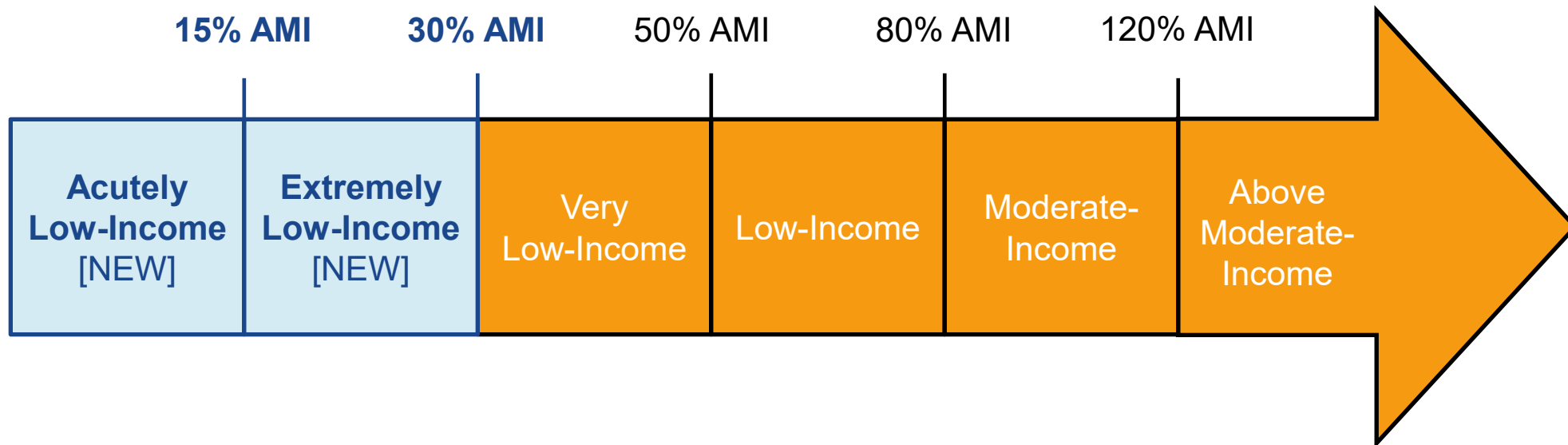
# Updates to 2025 APR Form

- Expanded income categories (AB 3039)
- Historic Designations (AB 2580)
- Opportunity Area Tracking (AB 2667)
- Enhanced Housing Element Program Reporting



# Expanded income categories (AB 3093)

Unit affordability levels:



- RHNA Implications (Table B)
  - ALI/ELI units will count towards VLI RHNA targets
- Resources: [Income Limits by County](#), Affordability Calculator on [APR Website](#)



# Historic Designations (AB 2580)

- Reporting on new historic designations in your jurisdiction

Table L [New Table]

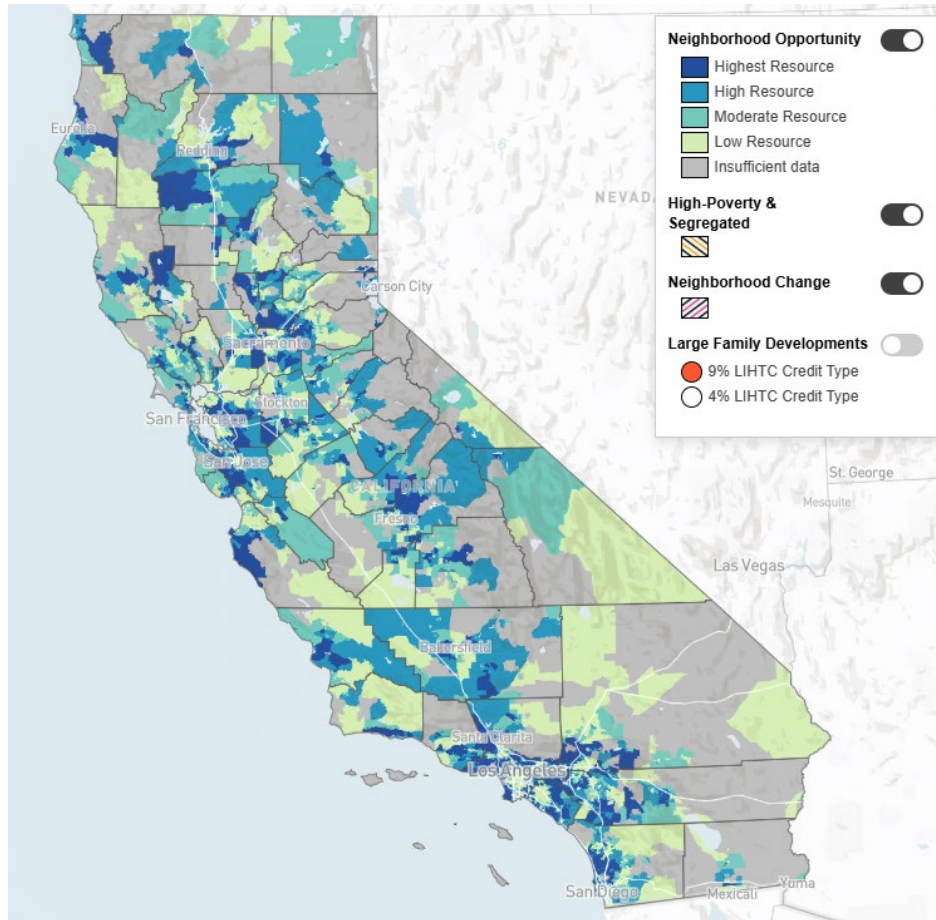
Tables A & A2 [New Field]

Table L							
Historical Resources							
Parcel Identifier		Designation				Size	Notes
1		2				3	4
APN	Street Address/Intersection	Date of Designation	Designation Level	Historic Site Period	Areas of Significance	Parcel Size (in acres)	Notes

Historic Sites
14
Is this project located on a site with an associated historical designation as outlined in Government Code Section 65400(a)(2)(N) and reported on Table L?



# Opportunity Area Tracking (AB 2667)



- Requires data on Opportunity Area designations of each housing project reported in APR
- **NO additional work needed from jurisdictions for this reporting**
  - HCD internal system will track this data, report it on APR dashboard

**CTCAC/HCD Opportunity Area Maps**





# Enhanced Housing Element Program Reporting

Table D updated to collect more clear data on housing element program implementation:

Table D								
Program Implementation Status pursuant to GC Section 65583								
Housing Programs Progress Report								
Describe progress of all programs including local efforts to remove governmental constraints to the maintenance, improvement, and development of housing as identified in the housing element.								
1	2	3	4	5	6	7	8	9
Name of Program	Objective	Projected Completion Date in Housing Element	Applicable Cycle	Status of Program Implementation	Program Implementation Details	Quantified Outcomes: Category	Quantified Outcomes: Count	Supporting Documents

# 2025 APR Form Walkthrough





# Submitting your APR (HCD Connect)

- [HCD Connect Login / Account Creation](#)
- [HCD Connect Help | California Department of Housing and Community Development](#)



## Revising prior APRs

- Revised APRs for 2018 through 2024 are accepted
- Must be submitted via email to [apr@hcd.ca.gov](mailto:apr@hcd.ca.gov)
- Must use current version of the form
- Please anticipate longer processing times, particularly around April 1 deadline

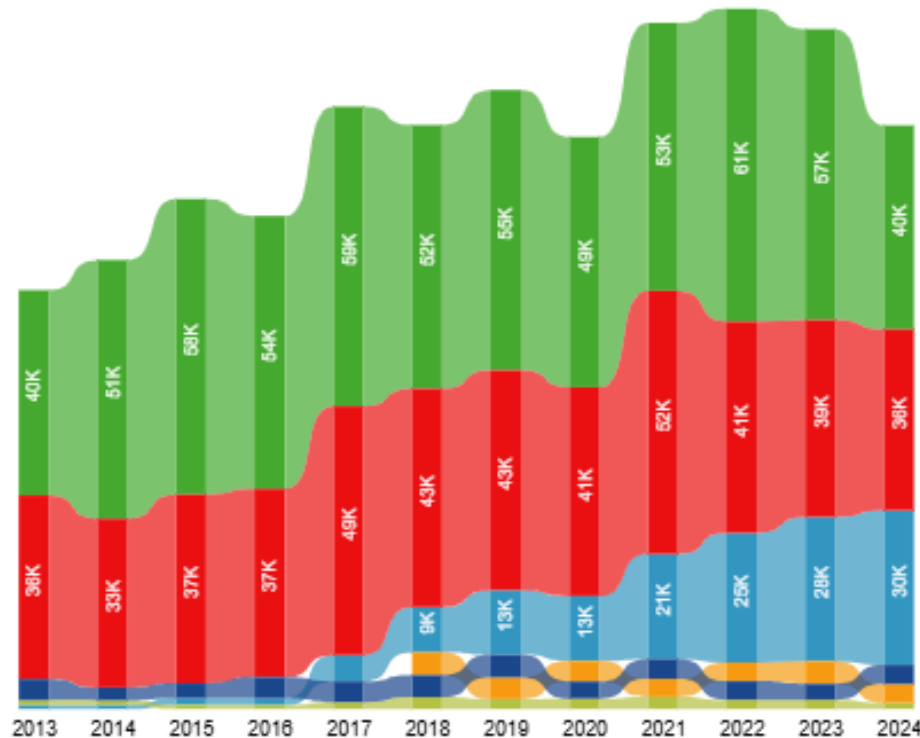


# Accessing APR Data - Dashboard

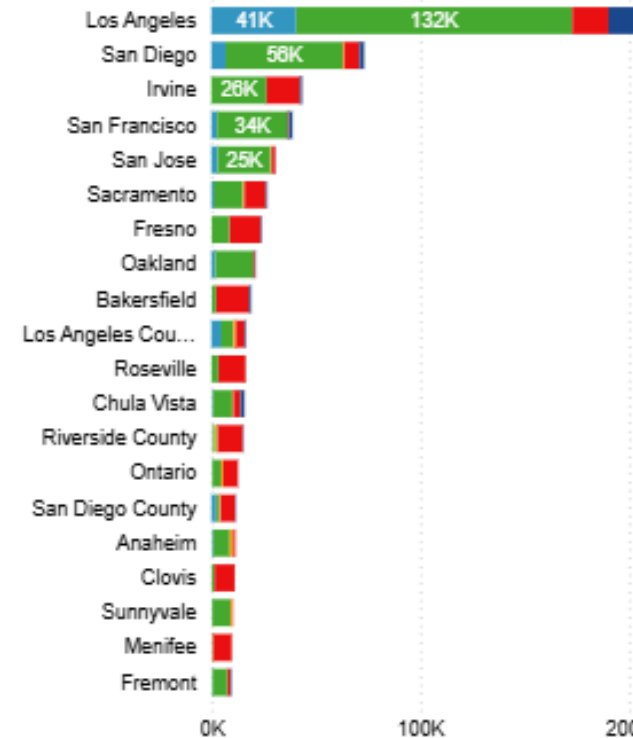
## Construction: Structure Type

- 2-4 Plex Units Per Structure
- 5 or More Units
- Accessory Dwelling Unit
- Mobile Home Unit
- Single Family Attached Unit
- Single Family Detached Unit

Units Permitted by Structure Type



Units Permitted by Structure Type by Jurisdiction





# Accessing APR Data – Open Data Portal

The screenshot shows the homepage of the California Open Data Portal. The background is a scenic view of a city at sunset, with a large bridge and a river in the foreground. The page has a dark blue header with the "CA" logo and the text "CALIFORNIA OPEN DATA PORTAL". Below the header is a navigation bar with links: "FIRE DATA", "DATASETS", "ORGANIZATIONS", "TOPICS", "STATE PORTALS", "DOCUMENTATION", "PORTAL METRICS", "CA STATE GEOPORTAL", and "ABOUT". In the top right corner of the header, there are links for "Log in" and "Contact". The main content area features the title "California Open Data" in large white text, followed by the tagline "We believe in the power of unlocking government data". Below this is a search bar with the placeholder text "E.g. environment" and a magnifying glass icon. At the bottom of the page, there are three small white circles, likely for a carousel or pagination.

Log in Contact

**CA** CALIFORNIA  
OPEN DATA PORTAL

FIRE DATA DATASETS ORGANIZATIONS TOPICS STATE PORTALS DOCUMENTATION PORTAL METRICS

CA STATE GEOPORTAL ABOUT

## California Open Data

We believe in the power of unlocking government data

E.g. environment





# Accessing APR Data – Download

## Housing Element Annual Progress Report (APR) Data by Jurisdiction and Year

Government Code section 65400 requires that each city, county, or city and county, including charter cities, prepare an annual progress report (APR) on the status of the housing element of its general plan and progress in its implementation. This dataset includes information reported to the Department of Housing and Community Development (HCD) by local jurisdictions on their APR form. Additional information about annual progress reports (APR), including the form, instructions, and definition can be found on HCD's website here: <https://www.hcd.ca.gov/planning-and-community-development/annual-progress-reports>.

### Data and Resources



APR Table A 🔥

Download



APR Table A Data Dictionary 🔥

Download



APR Table A2 🔥

Download



APR Table A2 Data Dictionary 🔥

Download



## Questions now for HCD?

Ask using the Zoom Q&A feature!

## Questions Later?

Email us at [apr@hcd.ca.gov](mailto:apr@hcd.ca.gov)





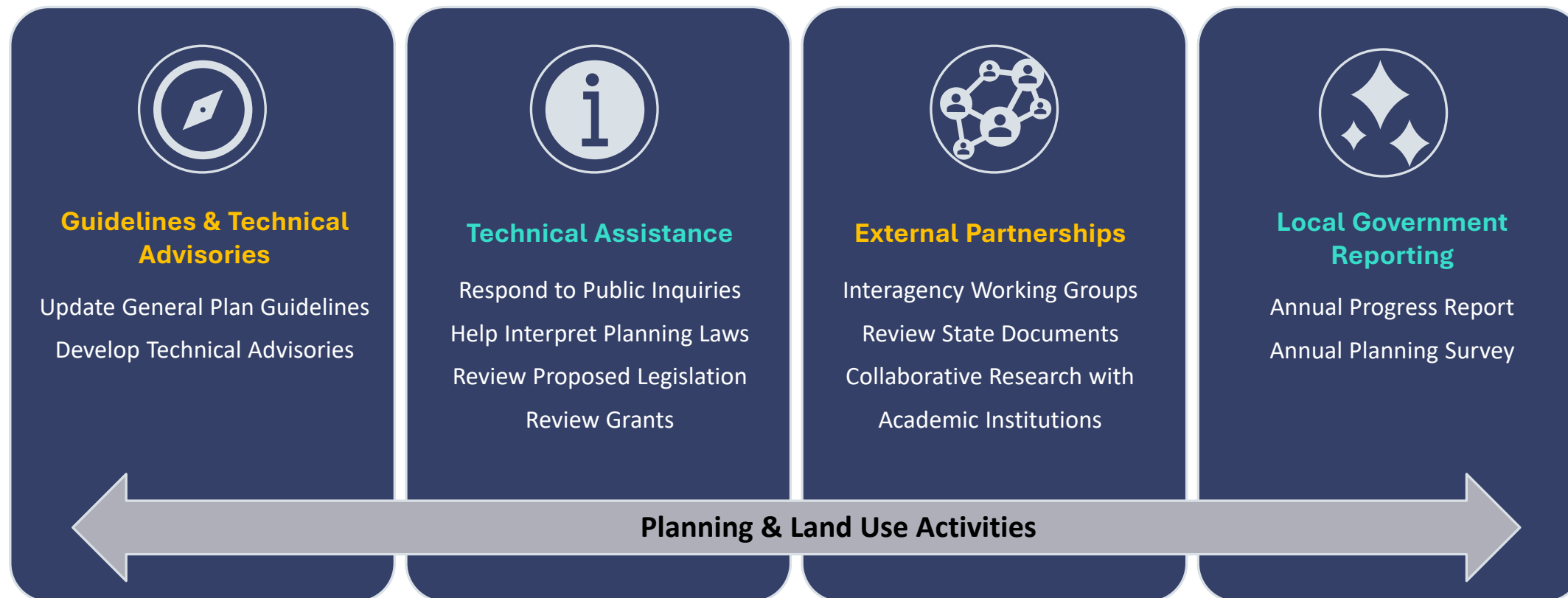
# General Plan Annual Progress Report (APR) Overview

## 2025 Reporting Period

---

GOVERNOR'S OFFICE OF LAND  
USE AND CLIMATE INNOVATION  
(LUCI)

# Overview of LCI's Planning Activities



# General Plan Overview

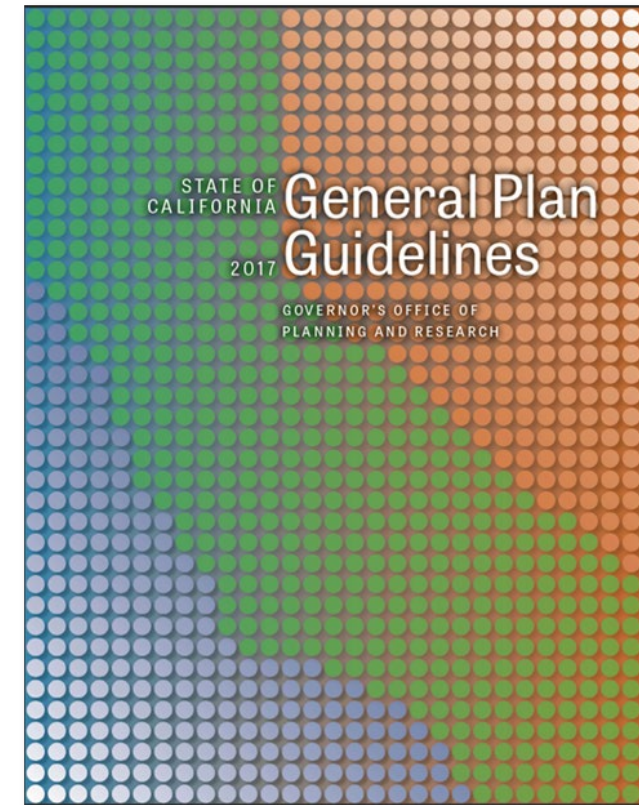
---

## Required Elements

- Land Use
- Circulation
- Housing
- Conservation
- Open Space
- Noise
- Safety
- Environmental Justice\*
- Air Quality\*

## Topical Considerations

- Climate Adaptation, Mitigation, and Resilience
- Health
- Equity
- Tribal Traditional Knowledge
- Community Engagement



# What is the General Plan Annual Progress Report (GP APR)?

---

- A report to the legislative body and public regarding the implementation of the General Plan for a given year (can be fiscal or calendar)
- The GP APR must be presented to the local legislature for review and acceptance, usually as a consent or discussion item on a regular meeting agenda
- For the 2025 cycle, GP APRs will only be accepted through the GP APR Submission Form
- GP APR Submission Form will be available **January 5, 2026**, at [lci.ca.gov/planning/general-plan](https://lci.ca.gov/planning/general-plan)

# GP APR Content Considerations - Reminders

---

- No standardized form or format
- Does not need to include all elements
- Intended to be a summary of activities for all elements that were implemented, not just the housing element
- Reporting on planning activities is required even when undergoing a comprehensive update



# GP APR Content Considerations

---

- Reporting period type (fiscal/calendar)
- Reporting period of GP APR being submitted
- Date of presentation/acceptance by the local legislative body
- Recommended to provide GP update history
  - Last update of each element
  - Next planned update for each element

# GP APR Content Considerations (Cont.)

---

- Which parts of the general plan were implemented over the past year in addition to the housing element?
- What has changed or was introduced in the past year that has impacted land use policy decisions?
- How does the general plan comply with LCI's General Plan Guidelines and GP requirements (e.g., environmental Justice, tribal consultation, etc.)?
- How can the information be presented in a manner useful for the public?

# Recommended GP APR Contents

---

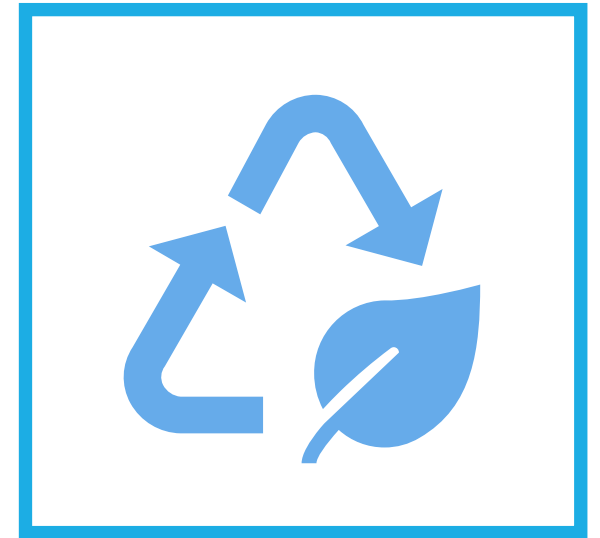
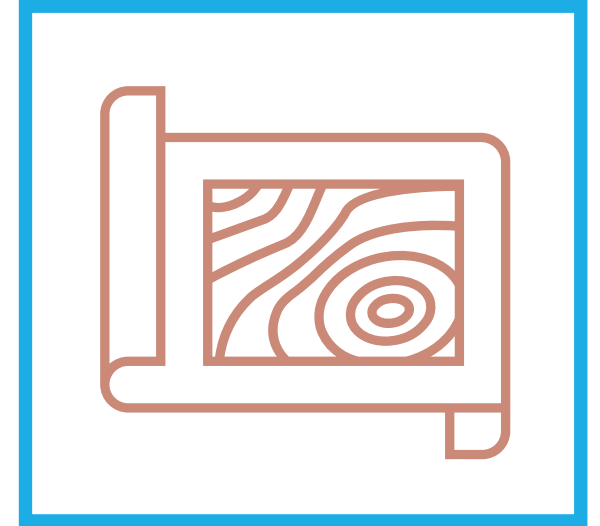
- **Local legislative priorities** for land use decision making (emergency ordinances, moratoria, etc.)
- Goals, policies, objectives, standards or other plan proposals that need to be added or were deleted, amended, or otherwise adjusted
- Interagency or local intergovernmental coordination efforts
- Equity planning considerations
- Implementation of mitigation measures from GP Final EIR or Negative Declaration
- One or more of the following with **specific references to planning activity**. These may include, but are not limited to:
  - Master plan creation and/or updates
  - Environmental assessments
  - Specific plan creation and/or updates
  - Annexation studies, and other studies or plans
  - General Plan amendments
  - Major development applications processed



# Recommended GP APR Contents - Additional Content (Cont.)

---

- Promote infill development, reuse, and redevelopment particularly in underserved areas while preserving cultural and historic resources
- Protect environmental and agricultural resources and other natural resources
- Encourage efficient development patterns
- Analyze economic development and long-term growth.



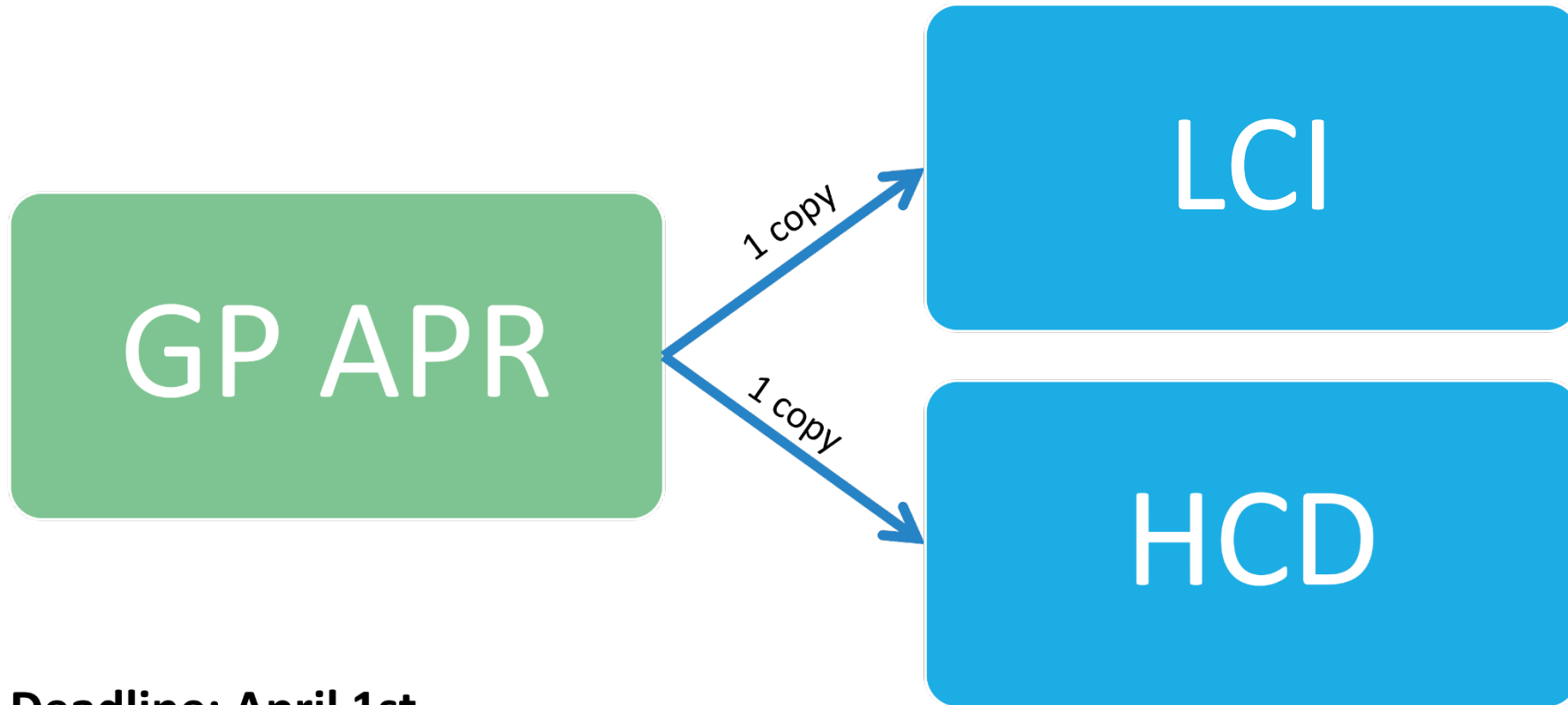
# Other Actions Related to General Plan Implementation

---

- Outline department goals, objectives, activities and responsibilities, as they relate to land use planning
- Perform a regional or sub-regional outlook of population growth, housing, job generation, and other socioeconomic trends
- Summarize the comments of other boards and commissions on the general plan implementation
- Identify and monitor **customer service improvements and methods** to encourage public involvement in planning activities
- Review and summarize **grant administration** for land use planning activities
- Provide a **technology review** such as implementation of Geographic Information Systems (GIS) or establishment of web sites

# GP APR Submission Requirements

---



**Deadline: April 1st**

# GP APR Submission to LCI

---

Submit GP APR through the  
GP APR Submission Form.  
This is the only method of  
submission.

# GP APR Submission to LCI

## *General Plan APR Submission Form*

---

The form requests the following information:

- Appropriate contact information
- Agency information
- Jurisdiction type (city, county, city/county)
- Name of jurisdiction
- Charter city
- Reporting period type of GP APR being submitted (fiscal or calendar)
- Reporting period of GP APR being submitted
- Resubmittal
- Reporting period of resubmittal
- Date of presentation or acceptance by a local legislative body. Planned dates are acceptable as well.
- **\*Optional questions for improving the GP APR process**

# GP APR Submission to LCI

*General Plan APR  
Submission Form*



The GP APR Submission Form will be available **January 5, 2026** at [lci.ca.gov/planning/general-plan](https://lci.ca.gov/planning/general-plan)

# GP APR Submission to HCD

---

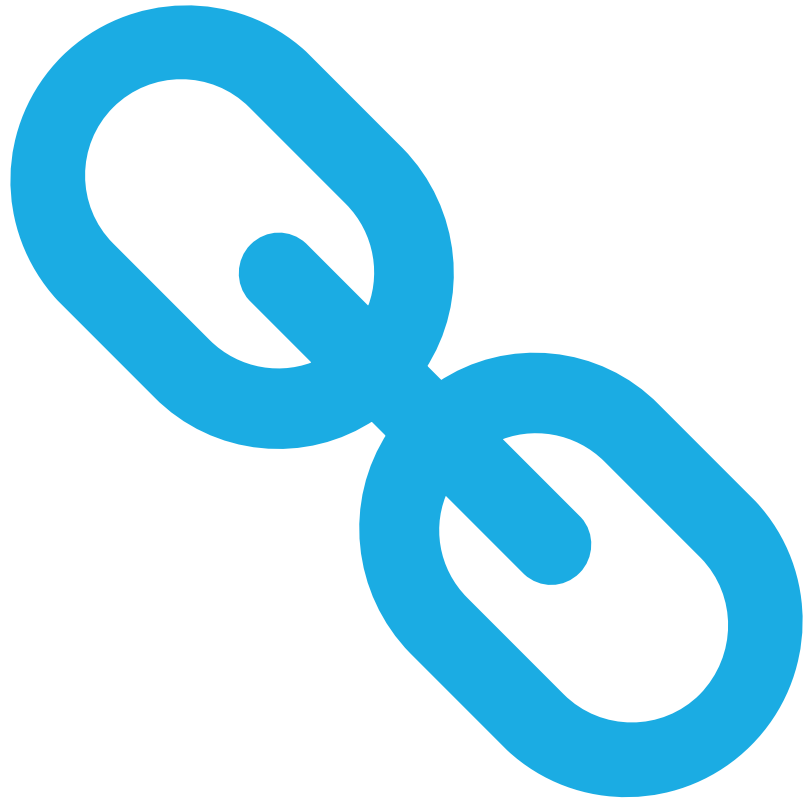


The GP APR may be submitted as an attachment in an MS Office application or PDF via email to [apr@hcd.ca.gov](mailto:apr@hcd.ca.gov).

# Some Reminders...

- Effective January 1, 2019, SB 1333 removed the charter city exemption for this requirement. See [GOV 65700](#), Amended by Stats. 2018, Ch. 856, Sec. 3.
- No penalties for submitting GP APR to LCI past April 1
- You can submit an APR before conducting a local public hearing and approval process, but jurisdictions are encouraged to resubmit GP APR to LCI after doing so.
- According to Government Code Section 65040.5(a) and (b), LCI is tasked with notifying a city or county if a general plan has not been revised within eight years and will notify the Attorney General if a general plan has not been revised within ten years.





## Helpful Links

---

LCI – General Plan Information: *General Plan Annual Progress Report*

[\(https://lci.ca.gov/planning/general-plan/\)](https://lci.ca.gov/planning/general-plan/)

HCD – Annual Progress Reports (APRs)  [\(https://www.hcd.ca.gov/planning-and-community-development/annual-progress-reports\)](https://www.hcd.ca.gov/planning-and-community-development/annual-progress-reports)



Thank you!

If you have any questions or concerns, please email [lici.apr@lici.ca.gov](mailto:lici.apr@lici.ca.gov).

---

# Q&A

